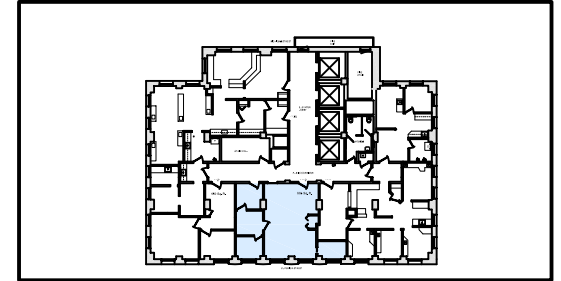


# Medical Arts Building

## Suite 1112

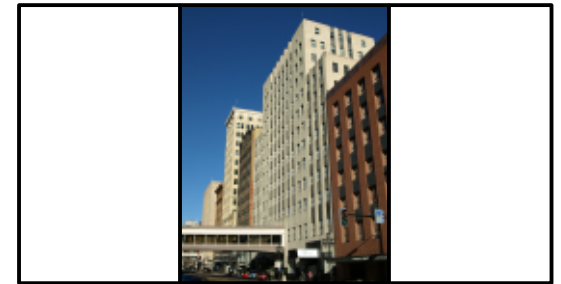
318-324 W. Superior St.  
Duluth, MN 55802



Medical Arts Building 11th Floor



Medical Arts Building Location



Medical Arts Building Superior St Elevation

**ONEIDA**

COMMERCIAL REAL ESTATE SERVICES

306 W. Superior St #1605  
Duluth, MN 55802  
218-722-0816  
218-720-6879 Fax  
[www.oneidacres.com](http://www.oneidacres.com)



**MA-1112**

November 14, 2017  
Scale 3/16" = 1'-0"